



NAS Announces Chief Executive Program Cohort

By NAS Jul 25, 2019



Alexandria, VA – NAS is pleased to announce the exceptional leaders selected to its fifth class of the Chief Executive Program. At a time when many arts and culture executives feel increasingly isolated and under-supported, the Chief Executive Program connects an international cohort of CEOs to explore leadership and strengthen their efforts to drive change in their organizations, communities and in the cultural field.

Over the next ten months, the cohort of selected executives will learn new frameworks with industry-leading faculty, engage in one-on-one reflective exercises with NAS-trained coaches and collaborate with one another. Convenings at Harvard Business School and a learning retreat location will support the cohort in building a community of practice they will call on for the rest of their careers. At the program's conclusion, participants will join an international community of nearly 250 program alumni.

Begun in 2011, the Chief Executive Program is a blended education program for artistic and executive leaders who are leading change across the world. Participants are selected through a highly competitive application process to identify leaders from outstanding institutions of all sizes and disciplines. From placing professional writers in schools to increase students' reading and writing skills through an infusion of language, poetry and multi-media arts experiences, to a choral ensemble which sings together with the community to foster healthier and more vibrant connections and so much more, each executive seeks to challenge the status quo through the vital role their organizations play in their communities.

“These leaders are integral parts of their communities, driving positive change in challenging times,” said Gail Crider, President and CEO of NAS. “Together with our partners at Harvard Business School, we look forward to supporting this amazing group as they learn and share knowledge across a diverse and cross-disciplinary network.”

The Chief Executive Program is supported by The Kresge Foundation, with backing for regional leaders by the Barr Foundation, The Educational Foundation of America and the Australia Council for the Arts.

The following leaders were chosen to participate in the Chief Executive Program for the effective, innovative, collaborative and curious work their organizations engage in:

- **Paula Arrigoni**, Bay Area Video Coalition
San Francisco, California
- **Stephen Beaudoin**, The Washington Chorus
Arlington, Virginia
- **Elysia Borowy-Reeder**, Museum of Contemporary Art Detroit
Detroit, Michigan
- **Caroline Bowditch**, Arts Access Victoria
South Melbourne, Australia
- **Betsey Brock**, On the Boards
Seattle, Washington
- **Raymond Caldwell**, Theater Alliance
Washington, District of Columbia
- **Jackie Clay**, Coleman Center for the Arts
York, Alabama
- **Teresa Coleman Wash**, Bishop Arts Theatre Center
Dallas, Texas
- **Damien Crutcher**, Crescendo Detroit
Detroit, Michigan
- **Elise DeMarzo**, City of Palo Alto Public Art Program
Palo Alto, California
- **Peter DiMuro**, The Dance Complex
Cambridge, Massachusetts
- **David Durante**, Sno-Isle Libraries
Marysville, Washington
- **Christopher Edwards**, Actors Shakespeare Project
Jamaica Plain, Massachusetts
- **Casandra Hernández Faham**, CALA Alliance
Phoenix, Arizona
- **Molly Fannon**, Museum for the United Nations - UN Live
Alexandria, Virginia
- **Pamela Franks**, Williams College Museum of Art
Williamstown, Massachusetts
- **Kaye Glamuzina**, City of Melbourne
Carlton, Victoria
- **Jennifer Green-Flint**, Shenandoah Conservatory Arts Academy
Winchester, Virginia
- **Deana Haggag**, United States Artists
Chicago, Illinois
- **Akilah Halley**, Marwen
Chicago, Illinois
- **Vivian Hua**, Northwest Film Forum
Seattle, Washington
- **Anne Kraybill**, The Westmoreland Museum of American Art
Greensburg, Pennsylvania
- **Shawn LaCount**, Company One Theatre
Boston, Massachusetts
- **Tim Lennon**, LANGSTON
Seattle, Washington
- **Michael Luria**, University of Arizona College of Science
Tucson, Arizona
- **Kristin Makhholm**, Minnesota Museum of American Art
St. Paul, Minnesota
- **Robert Massey**, Louisville Orchestra
Louisville, Kentucky
- **Paloma McGregor**, BAX | Brooklyn Arts Exchange
Brooklyn, New York
- **Lori McKinney**, The RiffRaff Arts Collective
Princeton, West Virginia
- **Alice Nash**, Back to Back Theatre

- Geelong, Australia*
- **Brian Parkes**, JamFactory Contemporary Craft and Design
Adelaide, Australia
- **Roberta Pereira**, The Playwrights Realm
New York, New York
- **Joshua Preston**, Ballet Hispanico of New York
New York, New York
- **Steinunn Ragnarsdottir**, Icelandic Opera
Reykjavik, Iceland
- **Michelle Ramos**, Alternate ROOTS
New Orleans, Louisiana
- **Mariah Rankine-Landers**, Studio Pathways
Oakland, California
- **Claire Rice**, Arts Alliance Illinois
Chicago, Illinois
- **Suma Karaman Rosen**, InsideOut Literary Arts
Detroit, Michigan
- **Jeffrey Sharp**, Independent Filmmaker Project
Brooklyn, New York
- **Tony Sias**, Karamu House
Cleveland, Ohio
- **Janice Sinden**, Denver Center for the Performing Arts
Denver, Colorado
- **Chandra Stephens-Albright**, Kenny Leon's True Colors Theatre Company
Atlanta, Georgia
- **Sunny Sumter**, DC Jazz Festival
Washington, District of Columbia
- **Melia Tourangeau**, Pittsburgh Symphony Orchestra
Pittsburgh, Pennsylvania
- **Terri Trotter**, Midland Center for the Arts
Midland, Michigan
- **Christina Vassallo**, SPACES
Cleveland, Ohio
- **Kasandra VerBruggen**, Spy Hop Productions
Salt Lake City, Utah
- **Philip Watkins**, Desart
Alice Springs, Australia
- **Roger Weitz**, Opera Omaha
Omaha, Nebraska
- **Becky Witmer**, ACT Theatre
Seattle, Washington
- **Fionn Yeung**, Leisure & Cultural Services Department, HKSAR
Hong Kong, China
- **Edward Yim**, American Composers Orchestra
New York, New York

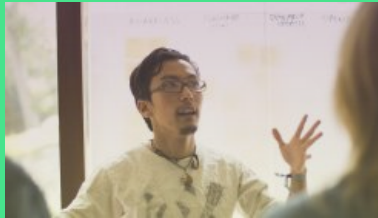
About NAS

NAS strengthens the arts and culture sector by creating meaningful and useful educational experiences for leaders at all levels of the ecosystem – from boards and CEOs to entrepreneurs and artists – giving them the tools, connections and support to transform their leadership, their organizations and their communities.

Over our 30-year history, we have worked with thousands of people to build management and leadership capacities. Our model is to build connections that have a high level of trust and that are both deep and broad: we work closely with individual communities and connect local leaders with a broad and diverse network of likely and unlikely allies from across the globe.

Our approach brings concepts and frameworks from outside the sector to bear on the seemingly intractable problems that arts

leaders face every day. We partner with faculty from top-tier universities who excel in both researching and teaching to deliver programs such as the Chief Executive Program, Creative Community Fellows and the Executive Program in Arts and Culture Strategy. Learn more at www.artstrategies.org.



Online Course Inspiring & Motivating Arts & Culture Teams today!

Receive email updates

Keep in the know with what's happening at NAS. Join our mailing list!

SUBSCRIBE

Related

You may also like:

Leading Large-Scale Social Change

FACULTY

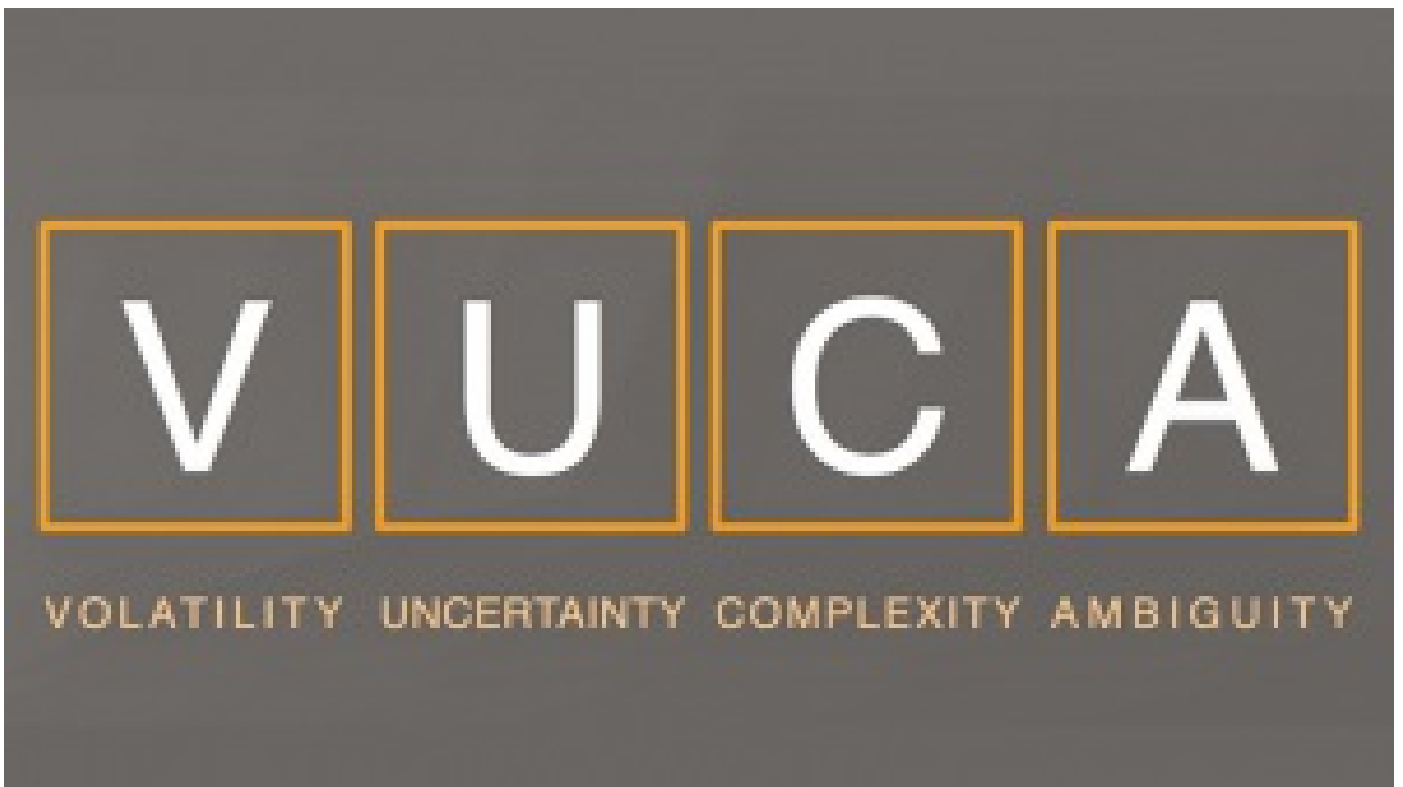
Nora Silver



The 7 Levers of Large-Scale Social Change



The Planks for Leading Change



VUCA

Partner with us

Join with us to change the status quo in your community.

Give

Help us build and support a diverse community of cultural leaders who drive inspiring change for the future.

Contact us

We're in the office
Mon-Fri 8:30am-5pm
team@artsstrategies.org
Ph: 571- 482- 5789

Subscribe



[Privacy Policy](#) [Terms of Use for Online Services](#) [Copyright Policy](#) [Community Guidelines](#) [Accessibility](#)

Copyright © 2019 National Arts Strategies, Inc.